



WINTER CME SERIES



JANUARY 15, 2025

Hematologic Malignancies – Updates from ASH

MORGAN'S
ON FULTON

950 W FULTON MARKET
CHICAGO, IL 60607

1-7PM CT

ORGANIZED BY



HOSTED BY



ACCREDITED BY




ACCREDITATION

This activity is jointly provided by Global Education Group and myMedEd, Inc.



PHYSICIAN ACCREDITATION STATEMENT

 This activity has been planned and implemented in accordance with the accreditation requirements and policies of the Accreditation Council for Continuing Medical Education (ACCME) through the joint providership of Global Education Group (Global) and myMedEd, Inc. Global is accredited by the ACCME to provide continuing medical education for physicians.

PHYSICIAN CREDIT DESIGNATION

Global Education Group designates this live activities for a maximum of 3.0 AMA PRA Category 1 Credits™ each. Physicians should claim only the credit commensurate with the extent of their participation in the activity.

GLOBAL CONTACT INFORMATION

For information about the accreditation of this program, please contact Global at 303-395-1782 or cme@globaleducationgroup.com.

INSTRUCTIONS FOR OBTAINING CREDIT

To receive credit, participants must attend the activity in its entirety. Participants must also score at least 70% on the post-test and submit it with the evaluation. Upon completion of the evaluation, participants can claim credit and produce a certificate, which will be printable and emailed to the address provided on the form.

DISCLOSURE OF UNLABELED USE

This educational activity may contain discussion of published and/or investigational uses of agents that are not indicated by the FDA. Global Education Group (Global) and myMedEd do not recommend the use of any agent outside of the labeled indications.

The opinions expressed in the educational activity are those of the faculty and do not necessarily represent the views of any organization associated with this activity. Please refer to the official prescribing information for each product for discussion of approved indications, contraindications and warnings.

SYSTEM REQUIREMENTS

Platform	Operating System	Processor	RAM	Internet Speed	Additional Requirements
Windows	Windows 7 or later	Dual-core 2 GHz or higher (i3/i5/i7/AMD equivalent)	4 GB or more	1.5 Mbps (up/down) for HD	Webcam, microphone, speakers or headset. Updated Zoom app.
macOS	macOS X 10.10 or later	Dual-core Intel processor (M1/M2 supported)	4 GB or more	1.5 Mbps (up/down) for HD	Webcam, microphone, speakers or headset. Updated Zoom app.
iOS	iOS 8.0 or later	N/A	N/A	1.5 Mbps (up/down) for HD	iPhone, iPad, or iPod Touch. Zoom app from App Store.
Android	Android 5.0 (Lollipop) or later	N/A	N/A	1.5 Mbps (up/down) for HD	Smartphone or tablet. Zoom app from Google Play Store.

FEE INFORMATION

REGISTRATION FEES PER SESSION:

- INDUSTRY = \$200
- MD/DO = \$100
- APP = \$50
- STUDENTS/FELLOWS = \$0.00
- UNIVERSITY OF ILLINOIS CHICAGO STAFF, FACULTY AND AFFILIATES = \$0.00

DISCLOSURES OF RELEVANT FINANCIAL RELATIONSHIPS

Global Education Group (Global) adheres to the policies and guidelines, including the Standards for Integrity and Independence in Accredited CE, set forth to providers by the Accreditation Council for Continuing Medical Education (ACCME) and all other professional organizations, as applicable, stating those activities where continuing education credits are awarded must be balanced, independent, objective and scientifically rigorous. All persons in a position to control the content of an accredited continuing education program provided by Global are required to disclose all financial relationships with any ineligible company within the past 24 months to Global. All financial relationships reported are identified as relevant and mitigated by Global in accordance with the Standards for Integrity and Independence in Accredited CE in advance of delivery of the activity to learners. The content of this activity was vetted by Global to assure objectivity and that the activity is free of commercial bias.

All relevant financial relationships have been mitigated.

To view a list of faculty disclosures, including faculty with relevant financial relationships with ineligible companies, go to: cmersvp.com/uicmew and select the ACCREDITATION tab.

The planners and managers have the following relevant financial relationships with ineligible companies:

The planners and managers at Global Education Group and MyMedEd have no relevant financial relationships to disclose.

DISCLAIMER

Participants have an implied responsibility to use the newly acquired information to enhance patient outcomes and their own professional development. The information presented in this activity is not meant to serve as a guideline for patient management. Any procedures, medications, or other courses of diagnosis or treatment discussed in this activity should not be used by clinicians without evaluation of patient conditions and possible contraindications on dangers in use, review of any applicable manufacturer's product information, and comparison with recommendations of other authorities.



WINTER CME SERIES



TARGET AUDIENCE

The series' target audience includes medical oncologists, hematologists, pathologists, oncology nurses, fellows, residents, advanced practice providers, family practitioners, primary care practitioners, allied health professionals and other providers interested in the care of patients with cancer.

LEARNING OBJECTIVES

After completing this activity, the participant should be better able to:

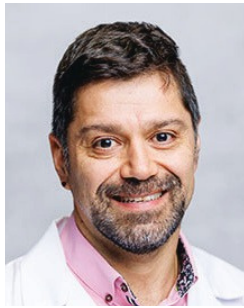
- Discuss advancements and optimal strategies for bispecific T-cell engagers and novel therapies in Non-Hodgkin Lymphoma (NHL).
- Review novel advancements in CAR T-cell therapy for NHL and leukemias.
- Explain how to optimize treatment selection in Multiple Myeloma (MM), including the use of minimal residual disease (MRD) in the therapeutic setting.
- Review the latest treatment approaches in Acute Lymphoblastic Leukemia (ALL) and Acute Myeloid Leukemia (AML).

AGENDA

1:00 PM	2:00 PM	Registration, Exhibits and Lunch
2:00 PM	2:05 PM	Introduction
2:05 PM	2:50 PM	Update on novel treatment strategies including bispecific T-Cell engagers in Non-Hodgkin Lymphoma (Paul Rubinstein, MD – University of Illinois Cancer Center)
2:50 PM	3:35 PM	Review the advances in cellular therapy for the treatment of Non-Hodgkin Lymphoma and Leukemias (Carlos Galvez, MD – University of Illinois Cancer Center)
3:35 PM	4:35 PM	Break, Exhibits, Non-CME Ancillary Event, Afternoon Pick Me Up
4:35 PM	5:20 PM	Updates on Myeloma treatment including the use of Minimal Residual Disease (Matias Sanchez, MD – University of Illinois Cancer Center)
5:20 PM	6:05 PM	OPEN FORUM: Latest treatments in ALL and AML (Noah Birch, MD – University of Illinois Cancer Center and Harry Sequeira, MD – Cook County Health)

FACULTY

SERIES COURSE CHAIR



MATIAS E. SANCHEZ, MD

Assistant Professor of Medicine
UI Health Division
Hematology and Oncology
University of Illinois Cancer Center
Chicago, IL

Dr. Matías Eugenio Sánchez is an Assistant Professor of Medicine in the Division of Hematology and Oncology at the University of Illinois, Chicago. Dr. Sánchez completed his medical degree at Universidad de Chile and an Internal Medicine residency at Tulane University and Beth-Israel Deaconess Medical Center, Harvard Medical School. He obtained fellowships in hematology and oncology at Pontificia Universidad Católica de Chile and bone marrow transplant at Memorial Sloan Kettering Cancer Center, and he is board-certified by the American Board of Internal Medicine.

His career includes roles as Chief of Bone Marrow Transplant Service at Clínica Alemana de Santiago and Hematology Oncology Staff at Clínica Santa María, Santiago. Dr. Sánchez has authored numerous publications and presented at conferences focusing on stem cell transplantation and acute lymphoblastic leukemia. His bilingual proficiency in English and Spanish enhances his ability to engage with a diverse patient and academic audience.

SESSION COURSE CHAIR



CARLOS GALVEZ, MD

Assistant Professor of Medicine
UI Health Division
Hematology and Oncology
Chicago, IL

Dr. Carlos Galvez is an Assistant Professor of Clinical Medicine in the Division of Hematology and Oncology at the University of Illinois, Chicago. He earned his medical degree from the University of Illinois College of Medicine, followed by a Hematology/Oncology fellowship and Internal Medicine residency at McGaw Medical Center, Northwestern University.

Dr. Galvez has earned numerous awards, including the ASH CRTI 2021 Award for his project on zanubrutinib and CAR T-cell therapy in B-cell Non-Hodgkin's Lymphoma, and multiple teaching accolades. He served as a Hematology/Oncology Chief Fellow and has actively participated in panel discussions, mentoring, and educational initiatives.

He has led clinical trials and studies, and his work extends to several publications in notable medical journals. His current research involves clinical trials and studies on lymphoma treatments and immune-related toxicities in cancer therapy.

Dr. Galvez's community service includes volunteer work in healthcare clinics and educational roles in medical training programs. He is fluent in English and Spanish, and his interests include astronomy, FC Barcelona, playing piano, and cooking Spanish cuisine.



WINTER CME SERIES



NOAH BIRCH, MD

Hematology and Oncology Specialist
Division of Hematology and
Oncology
University of Illinois Cancer Center
Chicago, IL

Dr. Noah Birch is a physician and researcher in the Division of Hematology and Oncology at UI Health. A lifelong native of the Chicago area, he received his medical training at Loyola University's Stritch School of Medicine where he also earned a Ph.D. degree studying molecular aspects of acute leukemia. He went on to pursue residency and fellowship training at Northwestern University where he continued to pursue additional research training in myeloid malignancies. Dr. Birch's clinical practice serves patients from various socioeconomic backgrounds and focuses on treating acute leukemia, myelodysplastic syndrome, myeloproliferative neoplasms, and chronic myeloid leukemia. His clinical and research practices also focus on genetics, epigenetics, and molecular profiling to improve outcomes in patients with hematologic disorders.



PAUL RUBINSTEIN, MD

Associate Professor of Medicine
Department of Medicine
Division of Hematology and
Oncology
University of Illinois Cancer Center
Chicago, IL

Dr. Paul Rubinstein practices in the Division of Hematology and Oncology at UI Health. Dr. Rubinstein's clinical focus is on treating hematological malignancies, and his research interests focus on the mechanism of disease, treatment, and new therapies for HIV-/AIDS-associated hematological malignancies and non-HIV associated lymphomas. He is a member of the AIDS Malignancy Consortium, a clinical trials consortium funded by the National Cancer Institute, where he has authored multicenter international trials for both Hodgkin and non-Hodgkin lymphoma; currently, he is the only investigator in Illinois that has trials open for the treatment and prevention of HIV-/AIDS-associated malignancies. He is a member of the Big Ten Cancer Consortium and Alliance for Clinical Trials in Oncology, where his focus is to open clinical trials for the treatment of lymphomas.



HARRY SEQUEIRA, MD

Fellow
Hematology and Oncology
Cook County Health
Chicago, IL

Dr. Harry G. Sequeira is an accomplished medical professional with a rich educational and professional background. A native Spanish speaker fluent in English and proficient in German, he graduated as a Doctor in Medicine and Surgery from the Universidad Nacional Autónoma de Nicaragua in 2016. Following his ECFMG certification in 2018, he honed his expertise in Internal Medicine during his residency at Saint Barnabas Hospital in New York, where he served as Chief Medical Resident. Currently, Harry is pursuing a Hematology-Oncology fellowship at Cook County Health in Chicago, where he also serves as Chief Fellow. His professional journey is marked by a commitment to education and leadership, including academic appointments at esteemed institutions like the City University of New York and NYIT College of Osteopathic Medicine.

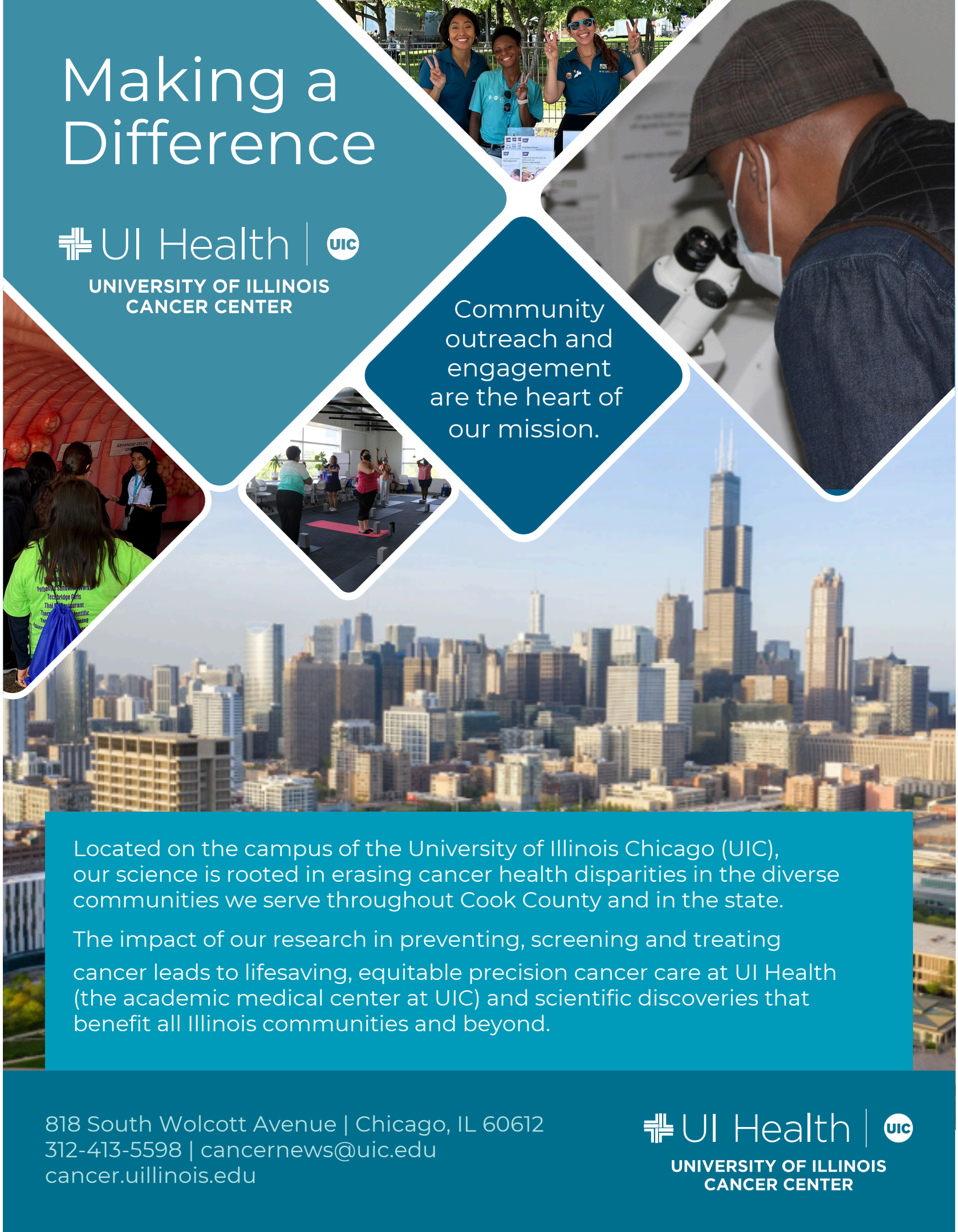
Harry's dedication extends beyond the clinic. His research contributions include publications on a wide range of topics, from Chagas disease to immunotherapy in oncology. He has spearheaded quality improvement projects and led initiatives to enhance research opportunities for medical residents. A strong advocate for service, Harry has volunteered extensively, including as a medical translator for charity surgeries and as part of a nonprofit organization fighting extreme poverty in Latin America. His multifaceted career reflects a deep commitment to advancing medicine, education and community welfare.

Making a Difference



UNIVERSITY OF ILLINOIS
CANCER CENTER

Community outreach and engagement are the heart of our mission.



Located on the campus of the University of Illinois Chicago (UIC), our science is rooted in erasing cancer health disparities in the diverse communities we serve throughout Cook County and in the state.

The impact of our research in preventing, screening and treating cancer leads to lifesaving, equitable precision cancer care at UI Health (the academic medical center at UIC) and scientific discoveries that benefit all Illinois communities and beyond.

818 South Wolcott Avenue | Chicago, IL 60612
312-413-5598 | cancernews@uic.edu
cancer.uillinois.edu



OPTIONAL NON-CME ANCILLARY EVENT

Learn about a new FDA approved
treatment combination in
newly diagnosed multiple myeloma

January 15, 2025, 3:35 p.m. – 4:35 p.m., 1st Floor

Tulio Rodriguez, MD

Director, Hematology, Bone Marrow Transplant
and Cellular Therapy Program
City of Hope Cancer Center
Chicago, IL



This activity is sponsored by

sanofi

SAVE THE

DATES!



SUMMER CME SERIES



JUNE 11, 18 & 25, 2025

MHUB

1623 FULTON STREET
CHICAGO, IL 60612

ORGANIZED BY



HOSTED BY



ACCREDITED BY

