



WINTER CME SERIES



JANUARY 29, 2025

Emerging Paradigms in the
Management of Oncology Patients

MORGAN'S
ON FULTON

950 W FULTON MARKET
CHICAGO, IL 60607

1-7 PM, CT

ORGANIZED BY



HOSTED BY



ACCREDITED BY



ACCREDITATION

This activity is jointly provided by Global Education Group and myMedEd, Inc.



PHYSICIAN ACCREDITATION STATEMENT

This activity has been planned and implemented in accordance with the accreditation requirements and policies of the Accreditation Council for Continuing Medical Education (ACCME) through the joint providership of Global Education Group (Global) and myMedEd, Inc. Global is accredited by the ACCME to provide continuing medical education for physicians.

PHYSICIAN CREDIT DESIGNATION

Global Education Group designates this live activities for a maximum of 3.0 AMA PRA Category 1 Credits™ each. Physicians should claim only the credit commensurate with the extent of their participation in the activity.

ABIM MOC RECOGNITION STATEMENT

Successful completion of this CME activity, which includes participation in the evaluation component, enables the participant to earn up to 3.0 and Medical Knowledge MOC points in the American Board of Internal Medicine's (ABIM) Maintenance of Certification (MOC) program. Participants will earn MOC points equivalent to the amount of CME credits claimed for the activity. It is the CME activity provider's responsibility to submit participant completion information to ACCME for the purpose of granting ABIM MOC credit.

DISCLAIMER

Participants have an implied responsibility to use the newly acquired information to enhance patient outcomes and their own professional development. The information presented in this activity is not meant to serve as a guideline for patient management. Any procedures, medications, or other courses of diagnosis or treatment discussed in this activity should not be used by clinicians without evaluation of patient conditions and possible contraindications on dangers in use, review of any applicable manufacturer's product information, and comparison with recommendations of other authorities.

INSTRUCTIONS FOR OBTAINING CREDIT

To receive credit, participants must attend the activity in its entirety. Participants must also score at least 70% on the post-test and submit it with the evaluation. Upon completion of the evaluation, participants can claim credit and produce a certificate, which will be printable and emailed to the address provided on the form.

SYSTEM REQUIREMENTS

Platform	Operating System	Processor	RAM	Internet Speed	Additional Requirements
Windows	Windows 7 or later	Dual-core 2 GHz or higher (i3/i5/i7/AMD equivalent)	4 GB or more	1.5 Mbps (up/down) for HD	Webcam, microphone, speakers or headset. Updated Zoom app.
macOS	macOS X 10.10 or later	Dual-core Intel processor (M1/M2 supported)	4 GB or more	1.5 Mbps (up/down) for HD	Webcam, microphone, speakers or headset. Updated Zoom app.
iOS	iOS 8.0 or later	N/A	N/A	1.5 Mbps (up/down) for HD	iPhone, iPad, or iPod Touch. Zoom app from App Store.
Android	Android 5.0 (Lollipop) or later	N/A	N/A	1.5 Mbps (up/down) for HD	Smartphone or tablet. Zoom app from Google Play Store.

FEE INFORMATION

Registration fee per session:

Industry = \$200

MD/DO = \$100

APP = \$50

Students/Fellows = \$0.00

University of Illinois Chicago Staff, Faculty, and Affiliates = \$0.00

DISCLOSURE OF UNLABELED USE

This educational activity may contain discussion of published and/or investigational uses of agents that are not indicated by the FDA. Global Education Group (Global) and myMedEd do not recommend the use of any agent outside of the labeled indications.

The opinions expressed in the educational activity are those of the faculty and do not necessarily represent the views of any organization associated with this activity. Please refer to the official prescribing information for each product for discussion of approved indications, contraindications and warnings.

DISCLOSURES OF RELEVANT FINANCIAL RELATIONSHIPS

Global Education Group (Global) adheres to the policies and guidelines, including the Standards for Integrity and Independence in Accredited CE, set forth to providers by the Accreditation Council for Continuing Medical Education (ACCME) and all other professional organizations, as applicable, stating those activities where continuing education credits are awarded must be balanced, independent, objective and scientifically rigorous. All persons in a position to control the content of an accredited continuing education program provided by Global are required to disclose all financial relationships with any ineligible company within the past 24 months to Global. All financial relationships reported are identified as relevant and mitigated by Global in accordance with the Standards for Integrity and Independence in Accredited CE in advance of delivery of the activity to learners. The content of this activity was vetted by Global to assure objectivity and that the activity is free of commercial bias.

All relevant financial relationships have been mitigated.

To view a list of faculty disclosures, including faculty with relevant financial relationships with ineligible companies, go to: cmersvp.com/uicmew and select the ACCREDITATION tab.

The planners and managers have the following relevant financial relationships with ineligible companies:

The planners and managers at Global Education Group and MyMedEd have no relevant financial relationships to disclose.

GLOBAL CONTACT INFORMATION

For information about the accreditation of this program, please contact Global at 303-395-1782 or cme@globaleducationgroup.com.



WINTER CME SERIES



TARGET AUDIENCE

The series' target audience includes medical oncologists, hematologists, pathologists, oncology nurses, fellows, residents, advanced practice providers, family practitioners, primary care practitioners, allied health professionals and other providers interested in the care of patients with cancer.

LEARNING OBJECTIVES

After completing this activity, the participant should be better able to:

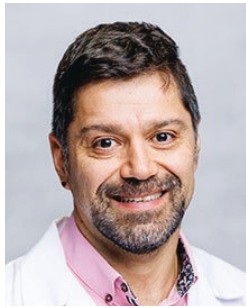
- Explain the limitations of current registrational studies as they apply to minority populations and FDA guidance for proving this racial disparity (health equity)
- Describe the principles of antibody-drug conjugate therapy and current approved indications
- Discuss the principles of biological cell engagers/cell therapies and current approved indications
- Identify currently approved and emerging diagnostics for early cancer detection and minimal residual disease

AGENDA

1:00 PM	2:00 PM	Registration, Exhibits and Lunch
2:00 PM	2:05 PM	Introduction
2:05 PM	3:00 PM	Innovative T-Cell Engagers and Adoptive T-Cell Therapies in Lung Cancer, Melanoma, and Soft Tissue Sarcoma (VK Gadi, MD – University of Illinois Cancer Center and Kai He, MD – Ohio State University Comprehensive Cancer Center)
3:00 PM	3:40 PM	Approved and Emerging Diagnostics for Early Cancer Detection and Minimal Residual Disease in Colon and Lung Cancer (<u>Gayatri Mohapatra</u> , MD – University of Illinois Cancer Center)
3:40 PM	4:40 PM	Break, Exhibits, Afternoon Pick Me Up
4:40 PM	5:25 PM	Principles of Antibody-Drug Conjugate Therapy and Current Approved Indications in Lung and Ovarian Cancer (<u>Rajat Thawani</u> , MD – University of Chicago)
5:25 PM	6:00 PM	HEALTHY EQUITY - Discuss limitations of current registrational studies as they apply to minority populations and FDA guidance for proving this racial disparity (Ryan Nguyen, MD – University of Illinois Cancer Center)
6:00 PM	7:00 PM	Networking Hour – All Attendees, Faculty as well as Gold and Platinum Sponsors

FACULTY

SERIES COURSE CHAIR



MATIAS E. SANCHEZ, MD
Assistant Professor of Medicine
UI Health Division
Hematology and Oncology
University of Illinois Cancer Center
Chicago, IL

Dr. Matías Eugenio Sánchez is an Assistant Professor of Medicine in the Division of Hematology and Oncology at the University of Illinois, Chicago. Dr. Sánchez earned his medical degree from Universidad de Chile and completed an Internal Medicine residency at Tulane University and Beth Israel Deaconess Medical Center, Harvard Medical School.

He obtained fellowships in hematology and oncology at Pontificia Universidad Católica de Chile and bone marrow transplant at Memorial Sloan Kettering Cancer Center, and he is board-certified by the American Board of Internal Medicine.

His career includes roles as Chief of Bone Marrow Transplant Service at Clínica Alemana de Santiago and Hematology Oncology Staff at Clínica Santa María, Santiago. Dr. Sánchez has authored numerous publications and presented at conferences focusing on stem cell transplantation and acute lymphoblastic leukemia. His bilingual proficiency in English and Spanish enhances his ability to engage with a diverse patient and academic audience.

SESSION COURSE CHAIR



AMEEN SALAHUDEEN, MD
Assistant Professor of Clinical
Medicine
University of Illinois Chicago
Chicago, IL

Dr. Ameen Salahudeen is an assistant professor of medicine and biochemistry at the University of Illinois Chicago. He focuses on improving health equity through novel technologies and AI platforms. His research group focuses on basic and translational research to advance screening, diagnostic and therapeutic paradigms, including projects within the AI.Health4all Center initiative in the University of Illinois College of Medicine. Salahudeen's primary clinical interest lies in thoracic and head and neck oncology, areas he specialized in as an Instructor of Medicine and hematology oncology fellow at Stanford University. Dr. Salahudeen is also specializing in the emerging field of multicancer early detection and management through novel blood based cancer screening tests.



WINTER CME SERIES

**VK GADI, MD, PhD**

Deputy Director, University of Illinois Cancer Center
 Professor and Director, Medical Oncology, UIC Department of Medicine
 University of Illinois Cancer Center Chicago, IL

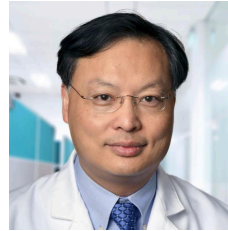
Dr. VK Gadi is a Professor and Director of Medical Oncology at the University of Illinois Chicago and the Deputy Director of the University of Illinois Cancer Center. Prior to his arrival in Chicago, He trained at (2000-2006) and later joined the faculty (2006-2020) of the University of Washington and Fred Hutchinson Cancer Center. Dr. Gadi's laboratory focuses on immunology and cancer, including many findings that have been commercialized for routine patient benefit. In addition to his administrative duties and laboratory research, Dr. Gadi is a practicing medical oncologist focused on care for patients with breast cancer and sarcoma. As a clinical investigator, he has led both industry sponsored and investigator-initiated clinical trials in breast and other cancers evaluating novel small molecules to biologics to cellular therapies. He has collectively published and presented hundreds of plenary sessions, abstracts, and manuscripts. He is passionate about education of all range of learners from high school to medical students, from residents to fellows, and to established academic and community providers in Chicago, across the country, and globally.

**RAJAT THAWANI, MBBS**

Assistant Professor of Medicine
 Lung Cancer Specialist
 University of Chicago
 Chicago, IL

Dr. Rajat Thawani is an accomplished Assistant Professor in the Department of Medicine at the University of Chicago, specializing in hematology and oncology. With a robust academic foundation, including an MBBS from the University of Delhi and advanced training at Case Western Reserve University, Maimonides Medical Center, and OHSU, he is a recognized expert in thoracic oncology and precision medicine. His research, highlighted by innovative studies in biomarker testing and targeted therapies, has significantly advanced the understanding and treatment of lung cancer. An educator and thought leader, Dr. Thawani actively mentors future clinicians and contributes to global oncology through impactful publications, clinical trials, and international collaborations.

Dr. Ryan Huu-Tuan Nguyen is an Assistant Professor of Clinical Medicine in the Division of Hematology/Oncology at the University of Illinois, Chicago. He holds a DO from the Western University of Health Sciences, with a residency in Internal Medicine at Indiana University and a fellowship in Hematology and Oncology at the University of Illinois, where he was a Chief Fellow. Dr. Nguyen has been the Precision Oncology Tumor Board Director at the University of Illinois Cancer Center since 2022, pioneering the first clinically focused molecular tumor board program. He received the prestigious Robert A. Winn Diversity in Clinical Trials Career Development Award in 2022, emphasizing his commitment to advancing community oriented clinical trialists. His professional roles include Clinical Fellow at the FDA, Oncology Educational Fellowship at the American Association for Cancer Research - FDA, and Page Editor at HemOnc.org. Dr. Nguyen is Board Certified in Internal Medicine, Hematology, and Medical Oncology, with an active Illinois medical license. He is an active research advisor with numerous publications and leads various cancer research projects.

**KAI HE, MD, PhD**

Medical Oncologist
 Assistant Professor
 Thoracic Oncology
 Ohio State University Comprehensive Cancer Center
 Columbus, OH

Dr. Kai He is an Associate Professor of Medicine with Tenure at The Ohio State University and a leading physician-scientist in the Thoracic Oncology Program at the OSU James Cancer Center. With an MD from Peking Union Medical College and a PhD in Cell Biology from the University of Alabama at Birmingham, Dr. He completed a fellowship in Medical Oncology at Johns Hopkins. His research focuses on cancer genomics and immunotherapy, including adoptive T cell therapy and bispecific antibodies for lung and other solid tumors. A global leader in clinical trials, he has contributed to groundbreaking FDA approvals of therapies such as Tarlatamab and TIL for advanced cancers. Dr. He has published extensively in prestigious journals and received notable accolades, including the Young Investigator Award from SITC.

**GAYATRY MOHAPATRA, MD, PhD**

Visiting Assistant Professor of Pathology
 Department of Pathology
 University of Illinois Chicago College of Medicine
 Chicago, IL

Dr. Gayatri Mohapatra is a distinguished Associate Professor and the Director of the Laboratory of Genomic Medicine at the University of Illinois at Chicago's Department of Pathology. With an extensive educational foundation in genetics from Utkal University, Stanford University, and UCSF, she has pioneered high-throughput genomic approaches in cancer research, particularly in ovarian and glioblastoma subtypes. Her work focuses on genomic characterization, functional gene studies, and the development of advanced diagnostic tools powered by next-generation sequencing technology. A committed leader in translational research, Dr. Mohapatra has made significant contributions to understanding tumor biology and improving clinical outcomes, as evidenced by her extensive publications and impactful research projects.

**RYAN NGUYEN, DO**

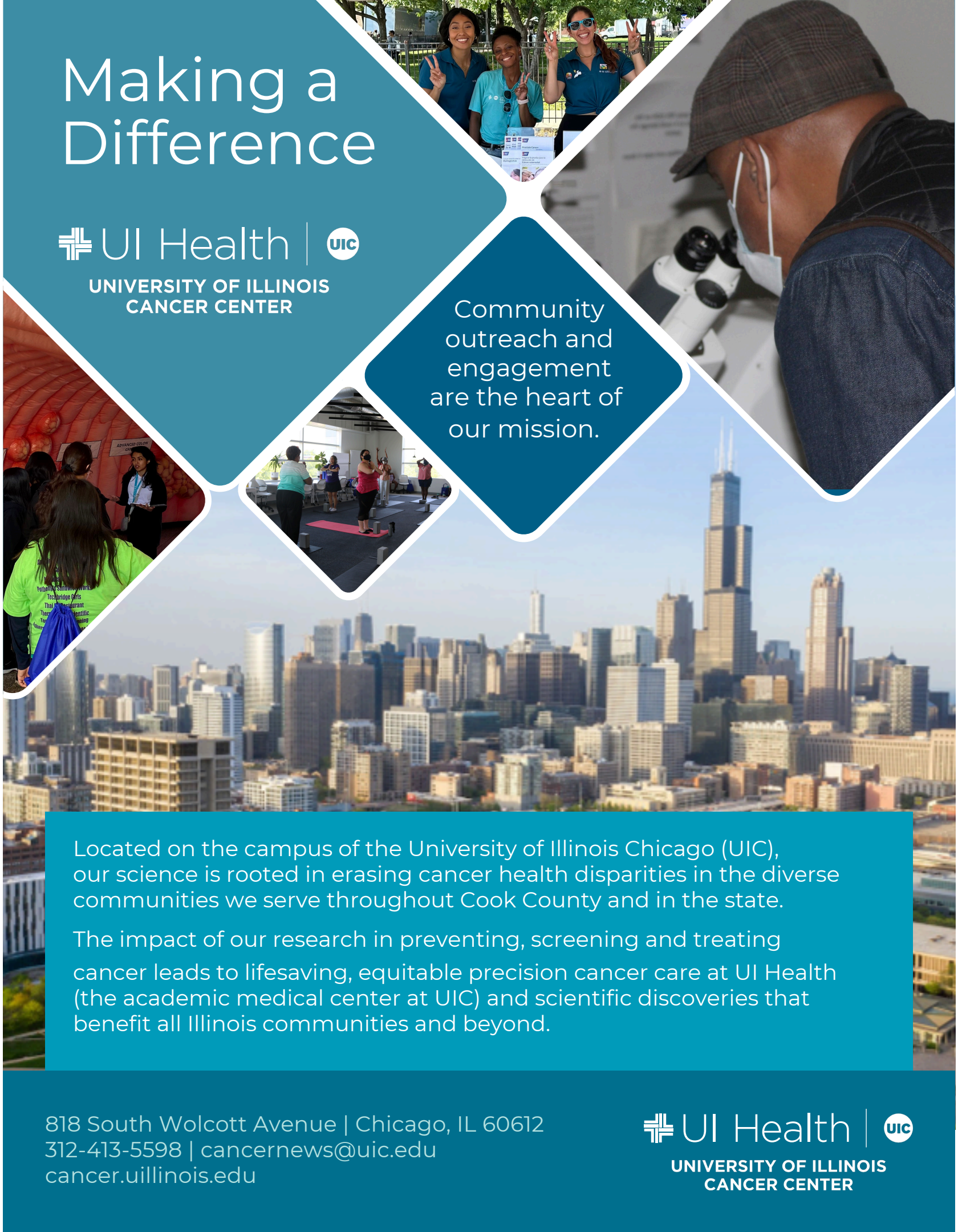
Assistant Professor of Clinical Medicine
 Director, Precision Oncology Tumor Board
 University of Illinois Cancer Center
 Chicago, IL

Making a Difference



UNIVERSITY OF ILLINOIS
CANCER CENTER

Community outreach and engagement are the heart of our mission.



Located on the campus of the University of Illinois Chicago (UIC), our science is rooted in erasing cancer health disparities in the diverse communities we serve throughout Cook County and in the state.

The impact of our research in preventing, screening and treating cancer leads to lifesaving, equitable precision cancer care at UI Health (the academic medical center at UIC) and scientific discoveries that benefit all Illinois communities and beyond.

818 South Wolcott Avenue | Chicago, IL 60612
312-413-5598 | cancernews@uic.edu
cancer.uillinois.edu



SAVE THE

DATES!



SUMMER CME SERIES



JUNE 11, 18 & 25, 2025

MHUB

1623 FULTON STREET
CHICAGO, IL 60612

ORGANIZED BY



HOSTED BY



ACCREDITED BY

